



Caring in the City

Edinburgh Carers' Hub Appeal



VOCAL - Voice of Carers Across Lothian
vocal.org.uk/edinburghcarershub

Our vision

In 2018, VOCAL will relocate the Edinburgh Carers' Centre to 60 Leith Walk in response to growing carer demand and to increase our capacity for carer support.

At 60 Leith Walk, a GP surgery for over 100 years, VOCAL will develop a new Carers' Hub with improved accessibility, transport connections and digital technology so that VOCAL's carer support services can reach every home in every part of the city.

Major refurbishment is required and we need your help to raise £100,000 through donations, trusts and grants to make the Edinburgh Carers' Hub meet the needs of carers now and in the future.



Why does VOCAL need to move?

Carer demand

1,800 new carers approached VOCAL for support in 2016 and our goal is to support 10,000 carers each year by 2021. To meet this demand we require larger premises to accommodate more staff and volunteers and more space for carer training courses, counselling and peer support.

Transport links and accessibility

Together with City of Edinburgh Council, NHS and our main planning partners we want to support more carers in their local communities.

A move to Leith locates us in a vibrant community with easier car and bike parking and excellent transport links to all city sectors. More VOCAL staff will be co-located with partner organisations to provide support for carers in their local area.

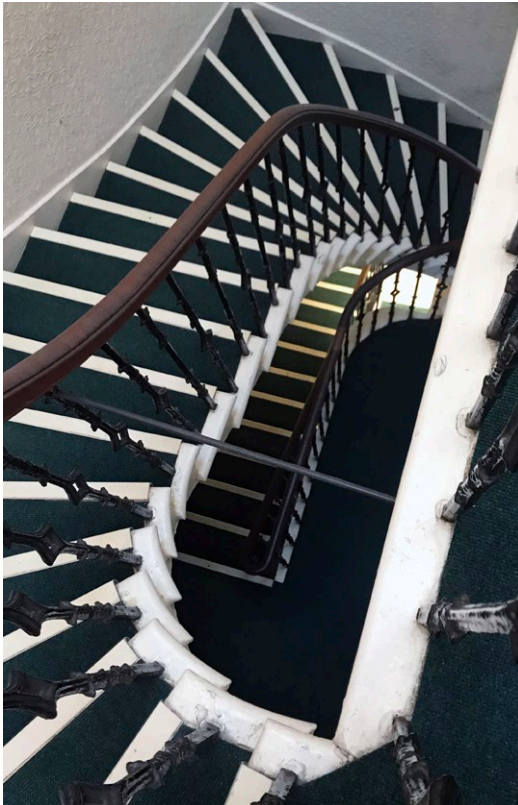
Financial and social investment

VOCAL wants to reduce high rent payments and energy costs and invest charity reserves for social return. The Edinburgh Carers' Hub will house a new social enterprise - Treasure Tree (see page 7) - which aims to improve carer's economic wellbeing and generate income to sustain VOCAL's carer support services. Through social enterprise and by acquiring a capital asset, we are also investing in VOCAL's future.

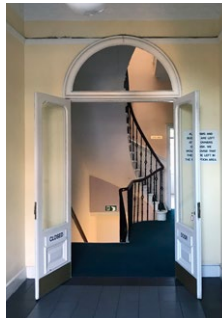


The refurbishment

60 Leith Walk is a Category B listed Georgian house built in 1804



This is a beautiful building and the refurbishments will retain many of the original features whilst making the building more accessible and providing digital technology to meet the needs of carers, VOCAL staff and volunteers.



We require funds for the following:

Lifts to improve accessibility

Cabling, wifi and telephony

Plumbing and heating

Furniture – desks, chairs & soft furnishings





How you can help

Make a donation at vocal.org.uk/donate

Make a significant contribution to Edinburgh's carer community by giving generously to our appeal.

Create a lasting legacy

Sponsor an area of the Carers' Hub, vital equipment or a carer activity and leave a lasting legacy for yourself or a loved one you wish to be remembered.

Corporate sponsorship

Support our journey, raise your company's profile and establish a long-term relationship with future benefit for any of your employees who may have a caring role.

Volunteer your time

Support our move to the new Carers' Hub by volunteering your time and skills. We need your help preparing for the move as well as setting up the new Carers' Hub.

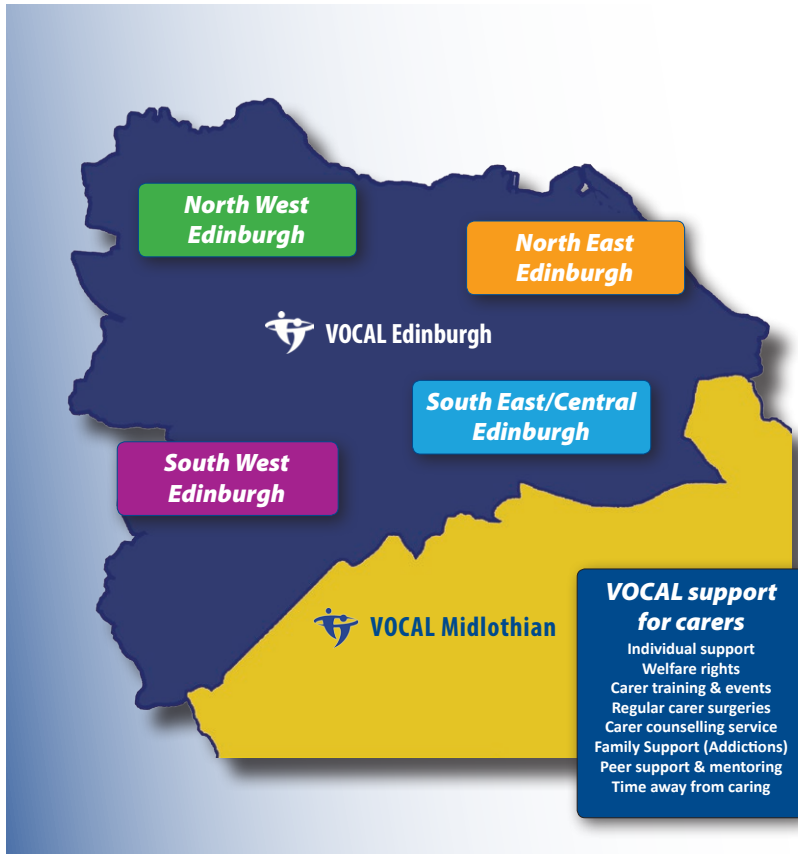
Donation, legacy or sponsorship enquiries:

Francesca Greaves - email fundraising@vocal.org.uk or phone 0131 622 6666.

Volunteering enquiries: Lesley Raper - email centre@vocal.org.uk or phone 0131 622 6666.



Caring in the city - support for carers



The Edinburgh Carers' Hub will be the focal point of carer support in Edinburgh, as well as housing VOCAL's head office and new social enterprise.

Carers can also access support in their local area through VOCAL carer support staff, peer support groups and events in all sectors of the city including:

- West Pilton Gardens Social Work Centre
- Wester Hailes Healthy Living Centre
- Allermuir Health Centre
- Libertus
- Leith library
- The Haven, South Queensferry

Find out more about all of VOCAL's carer support services at www.vocal.org.uk

Sell your unwanted goods and do good!

Treasure Tree is VOCAL's new social enterprise. We sell your treasures online in return for a donation from your proceeds.

BRONZE
75% seller
25% VOCAL

SILVER
50% seller
50% VOCAL

GOLD
25% seller
75% VOCAL

GOLD +
0% seller
100% VOCAL

We aim to:

Improve the economic wellbeing of unpaid carers

Raise money to ensure the sustainability of VOCAL carer support services

Encourage the re-use of unwanted goods to reduce waste and protect our environment



TreasureTree
Keep it local. Sell through VOCAL

Here are some of the items we have sold:



Ready to sell?

Email sell@treasuretree.scot

Call 0131 622 6666

Visit vocal.org.uk/treasuretree



VOCAL Carer Centre
8-13 Johnston Terrace
Edinburgh EH1 2PW

Tel: 0131 622 6666
Web: www.vocal.org.uk



Like VOCAL on Facebook:
[/VOCALCarers](https://www.facebook.com/VOCALCarers)



Follow VOCAL on Twitter:
[@EdinburghCarers](https://twitter.com/EdinburghCarers)



VOCAL (Voice of Carers Across Lothian) is a registered Scottish Charity: SC020755
Private limited company (Scotland): SC183050